

# Model ML-A



CE

MID  
Approved

OIML-R49  
Certified

## Multi-jet Liquid Sealed Vane Wheel Water Meter

- It is a liquid sealed water meter for residential application in sizes 15mm-50mm for cold water.

### Features

- Mechanical transmission movement equates to maximum reliability .
- The chamber of the rollers is liquid filled sealed for protecting the inner parts from the moisture and dust penetration.
- Sealed wet dial register .
- Internal strainer, inlet strainer.
- External regulating device, particularly suited in lower quality water.

### Standards Compliance

- Directive 2014/32/EU on measuring instruments;
- the European Standard EN14154+A1+A2:Water Meter;
- the International Organization of Legal Metrology OIML R-49: 2013(E)

### Optional Features

- Several lengths and connections available on request
- Non return Valve

### Working Conditions

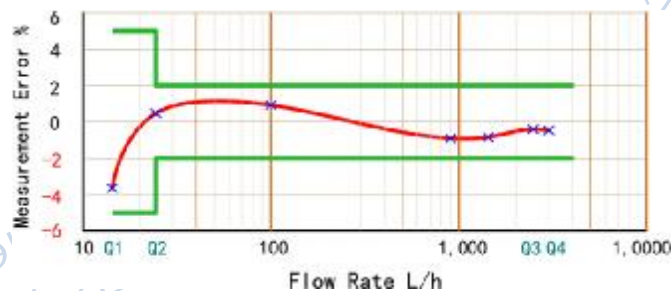
- Water temperature:  $\leq 50^{\circ}\text{C}$  for cold water meter
- Water pressure:  $\leq 1.6\text{MPa}$ (16bars)

### Accessories

- 2pcs couplings, 2pcs coupling nuts and 2pcs washers.

### Maximum Permissible Error

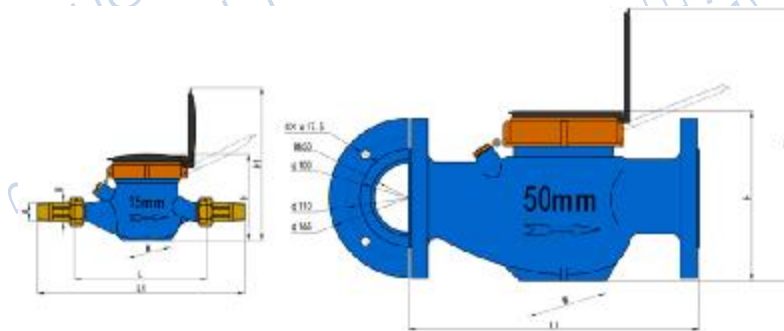
- In the lower zone from Q1 inclusive up to but excluding Q2 is  $\pm 5\%$ .
- In the upper zone from Q2 inclusive up to and including Q4 is  $\pm 2\%$ .



Ningbo AIMEI Meter Manufacture Co.,Ltd.  
www.chinaaimet.com  
aimet@chinaaimet.com  
(86) 574 8863 7838  
(86) 574 8863 7968

DN(mm)	15	20	25	32	40	50	
Size(inch)	1/2"	3/4"	1"	1-1/4"	1-1/2"	2"	
Q4(m <sup>3</sup> /h)	3.125	5	7.875	12.5	20	31.25	
Q3(m <sup>3</sup> /h)	2.5	4	6.3	10	16	25	
R80	Q2(l/h)	50	80	126	200	320	500
	Q1(l/h)	31.25	50	78.75	125	200	312.5
R100	Q2(l/h)	40	64	100.8	160	256	400
	Q1(l/h)	25	40	63	100	160	250
R125	Q2(l/h)	32	51.2	80.64	128	204.8	320
	Q1(l/h)	20	32	50.4	80	128	200
R160	Q2(l/h)	25	40	63	100	160	250
	Q1(l/h)	15.62	25	39.37	62.5	100	156.2
Max. Reading (m <sup>3</sup> )	99999				999999		
Min. Reading (Liter)	0.05						
Max. Pressure (bar)	16						
Pressure Loss ( $\Delta P$ )	63						
Max. Temperature	T30 or T50						
Pulse Output Option	Vmax=24V, Imax=100mA, Pmax=2W						

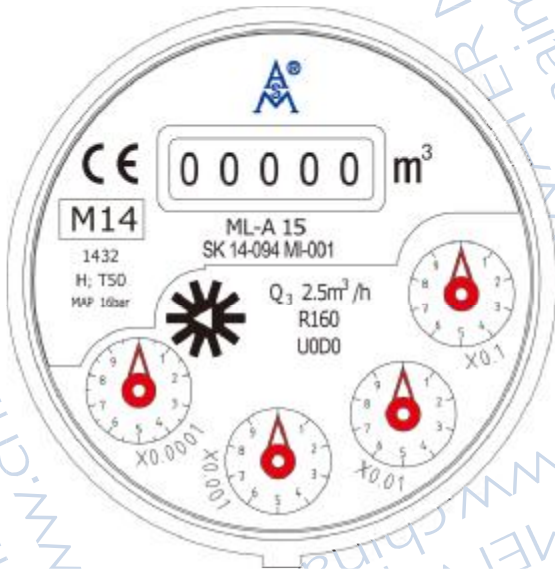
## Dimension



DN(mm)	15	20	25	32	40	50	
Size(inch)	1/2"	3/4"	1"	1-1/4"	1-1/2"	2"	
Length(L)	165/190	130/190	225/260	230/260	245/300	280/300	
Width(W)	99	99	103	104	124	125	
Height(H)	104	106	114	117	147	172	
Connecting Thread D	G3/4B	G1B	G1-1/4B	G1-1/2B	G2B	G2-1/2B	flange ISO7005



# Meter Dial Plate(DN15,R160)



## Exploded View

