

Model PD-CI



CE

MID
Approved

OIML-R49
Certified

Volumetric Piston Dry Type Water Meter

- It is a volumetric piston super dry water meter for residential application in size I5mm for cold water

Features

- Compact piston design, low starting flow rate
- Higher measuring range, up to Q3/Q1: 400.
- Sealed dry dial register ensures clear reading, 360° rotatable
- Magnetic drive mechanism with anti-magnetic protection
- Installation Position: any position

Standards Compliance

- Directive 2014/32/EU on measuring instruments;
- the European Standard EN14154+A1+A2: Water Meter;
- the International Organization of Legal Metrology OIML R-49: 2013(E)

Optional Features

- Several lengths and connections available on request
- Non return Valve
- Reed switch option

Working Conditions

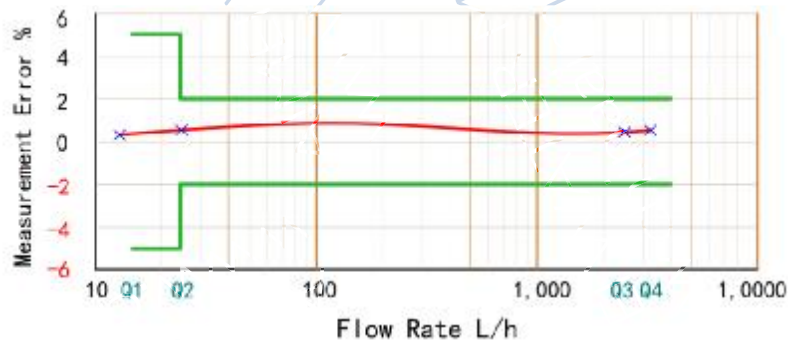
- Water temperature: $\leq 50^{\circ}\text{C}$ for cold water meter
- Water pressure: $\leq 1.6\text{MPa}$ (16bars)

Accessories

- 2pcs couplings, 2pcs coupling nuts and 2pcs washers.

Maximum Permissible Error

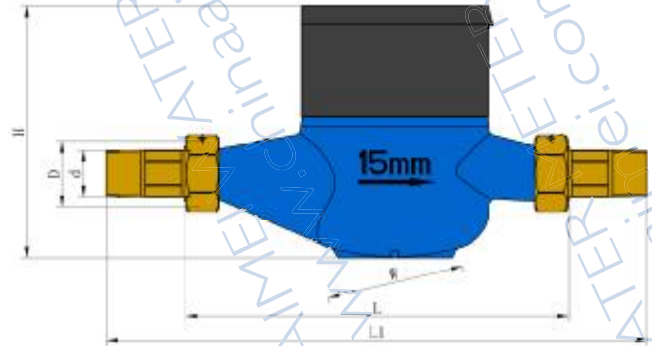
- In the lower zone from Q1 inclusive up to but excluding Q2 is $\pm 5\%$.
- In the upper zone from Q2 inclusive up to and including Q4 is $\pm 2\%$.



Ningbo AIMEI Meter Manufacture Co., Ltd.
www.chinaaimet.com
aimet@chinaaimet.com
(86) 574 8863 7838
(86) 574 8863 7968

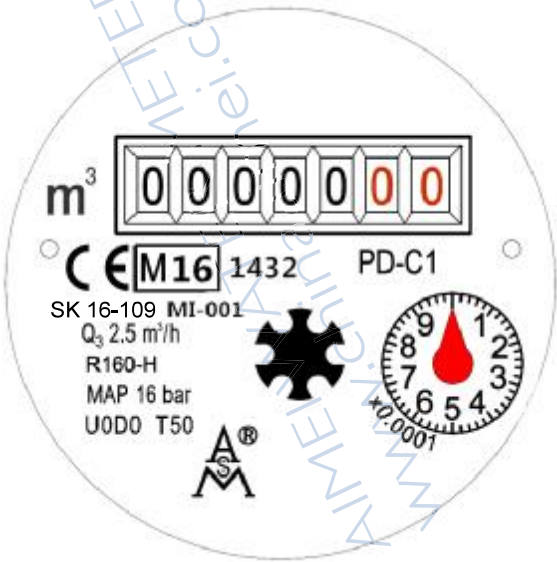
Dimension

DN(mm)	15	
Size(inch)	1/2"	
Q4(m ³ /h)	3.125	
Q3(m ³ /h)	2.5	
R200	Q2(l/h)	20
	Q1(l/h)	12.5
R250	Q2(l/h)	16
	Q1(l/h)	10
R315	Q2(l/h)	12.7
	Q1(l/h)	7.94
R400	Q2(l/h)	10
	Q1(l/h)	6.2
Max. Reading (m ³)	99999	
Min. Reading (Liter)	0.02	
Max. Pressure (bar)	16	
Pressure Loss (ΔP)	63	
Max. Temperature	T30 or T50	
Pulse Output Option	Vmax=24V, Imax=100mA, Pmax=2W	



DN(mm)	15
Size(inch)	1/2"
Length(L)	110/115/130/165/170/190
Width(W)	83.4
Height(H)	110.6
Connecting Thread D	G3/4B

Meter Dial Plate(DN15,R160)



Exploded View

